



MONTHLY MEMBERSHIP PROGRESS REPORT

District 201W1

Results as of: 06/30/2018

GMT: OPEN

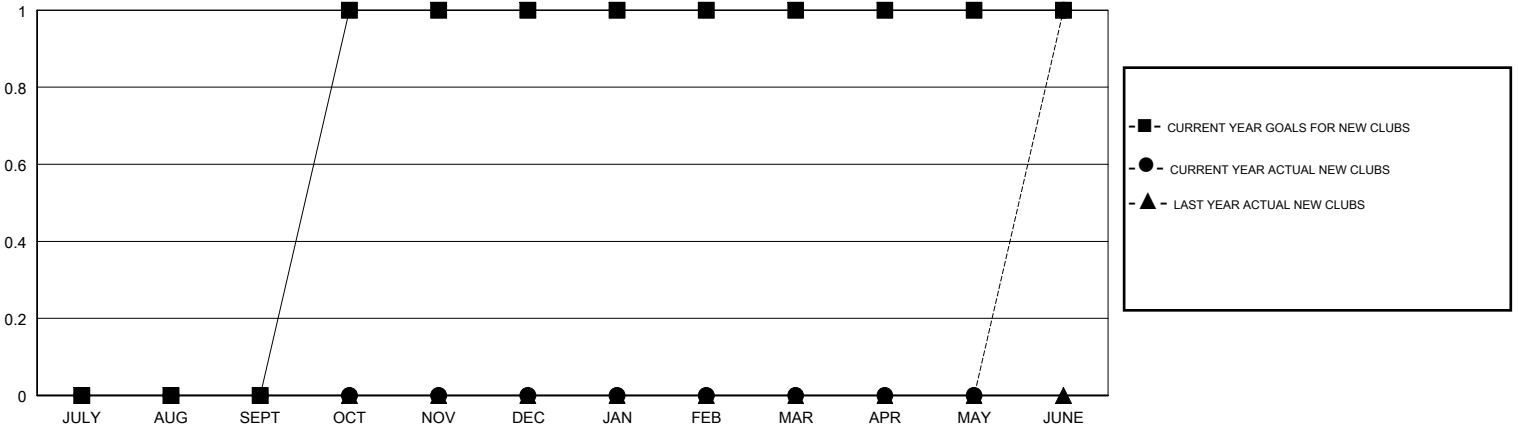
LOCATION AUSTRALIA

GMT CA

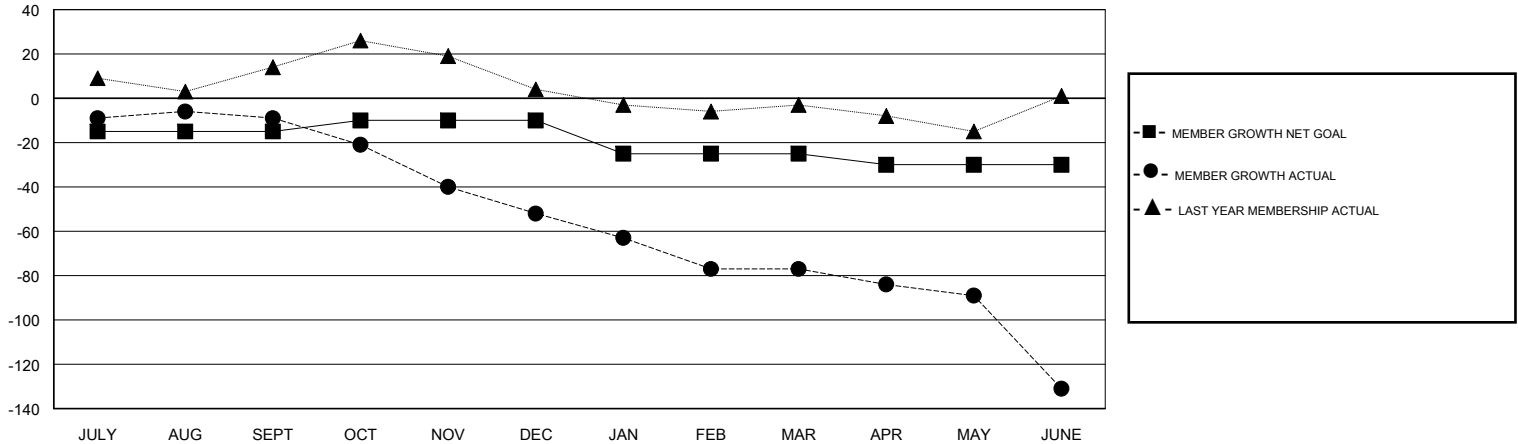
Clubs			
RESULTS FOR 2017-2018			
QUARTER	NEW CLUB GOAL	NEW CLUBS	DROPPED CLUBS
JULY/AUG/SEPT	0	0	0
OCT/NOV/DEC	1	0	1
JAN/FEB/MAR	0	0	0
APR/MAY/JUNE	0	1	0

Members			
RESULTS FOR 2017-2018			
QUARTER	MEMBER GROWTH NET GOAL	MEMBER GROWTH ACTUAL	DROPPED MEMBERS ACTUAL (including transfers)
JULY/AUG/SEPT	-15	23	29
OCT/NOV/DEC	5	20	51
JAN/FEB/MAR	-15	23	42
APR/MAY/JUNE	-5	46	96

GOALS AND ACTUAL NEW CLUBS CUMULATIVE



GOALS AND ACTUAL MEMBERS CUMULATIVE



DROPPED CLUBS: 1	31 CLUBS OF 46 ADDED 1 OR MORE NEW MEMBERS	<u>GENDER DISTRIBUTION</u>	
DROPPED MEMBERS		MALE	408 (55.66%)
DECEASED	7	FEMALE	325 (44.34%)
CLUB CANCELLED	0	Women Percentage Fiscal Year Goal: 45%	
OTHER	211	CLICK HERE FOR CUMULATIVE MEMBERSHIP DATA	
TOTAL	218	TOTAL FAMILY UNIT MEMBERS	0
		FAMILY MEMBERS PAYING HALF DUES	0